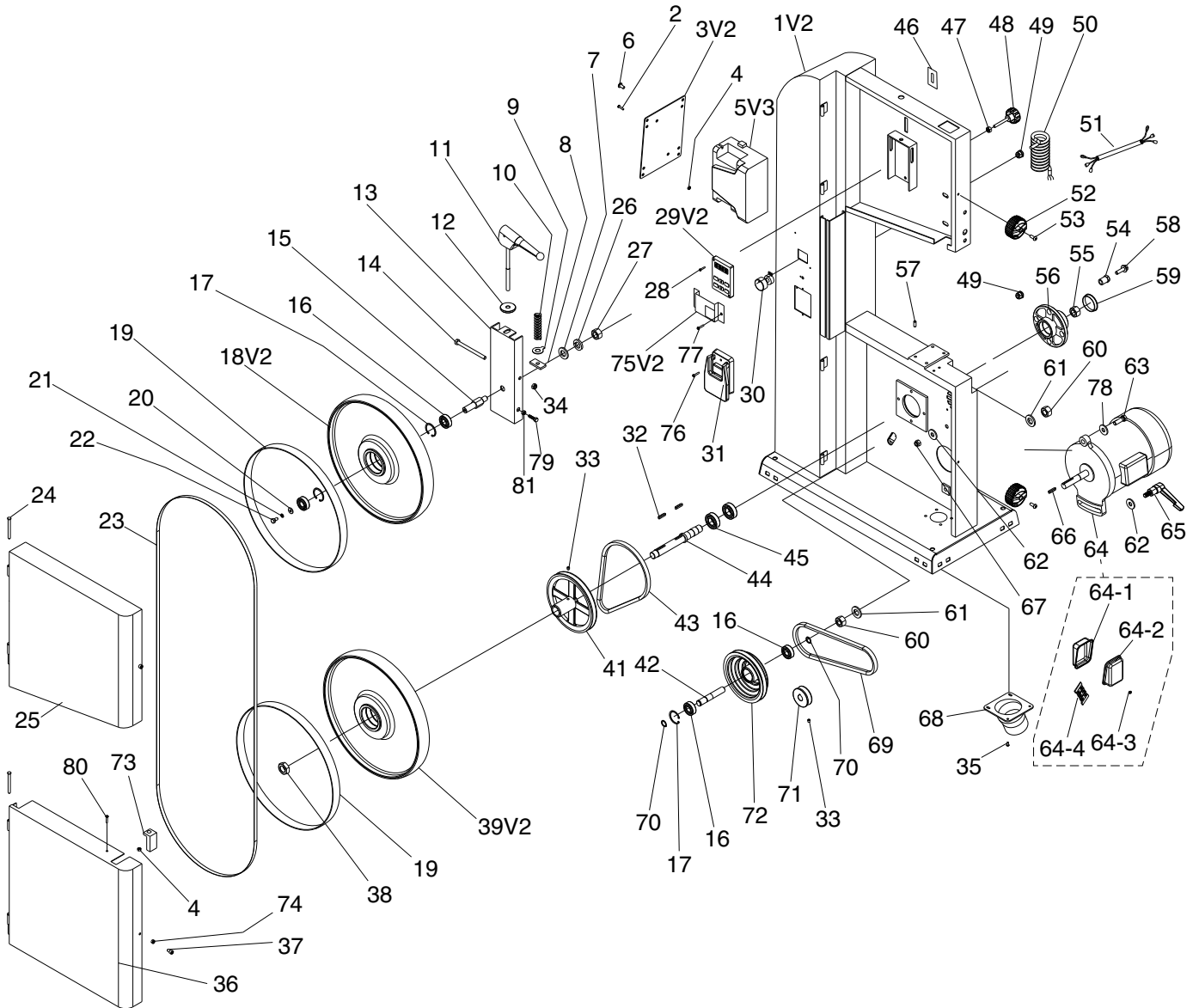


SECTION 9: PARTS

We do our best to stock replacement parts when possible, but we cannot guarantee that all parts shown are available for purchase. Call (800) 523-4777 or visit www.grizzly.com/parts to check for availability.

Main



Main Parts List

REF	PART #	DESCRIPTION
1V2	P0621X001V2	BODY V2.12.20
2	P0621X002	PHLP HD SCR 10-24 X 3/4
3V2	P0621X003V2	CONTROLLER COVER PLATE V2.12.20
4	P0621X004	HEX NUT 10-24
5V3	P0621X005V3	INVERTER RHYME RM6S2 1-PH 200V V3.12.20
6	P0621X006	PHLP HD SCR 1/4-20 X 1/2
7	P0621X007	FLAT WASHER 1/2
8	P0621X008	TENSION NUT
9	P0621X009	BLADE TENSION POINTER
10	P0621X010	COMPRESSION SPRING
11	P0621X011	BLADE TENSION HANDLE
12	P0621X012	BLADE TENSION HANDLE WASHER
13	P0621X013	UPPER WHEEL BRACKET
14	P0621X014	HEX BOLT M8-1.25 x 110
15	P0621X015	UPPER WHEEL SHAFT
16	P0621X016	BALL BEARING 6202ZZ
17	P0621X017	INT RETAINING RING 35MM
18V2	P0621X018V2	UPPER WHEEL V2
19	P0621X019	TIRE
20	P0621X020	FLAT WASHER 1/4
21	P0621X021	LOCK WASHER 1/4
22	P0621X022	HEX BOLT 1/4-20 X 3/8
23	P0621X023	SAW BLADE 108" X 3/8" 6-TPI HOOK
24	P0621X024	HINGE PIN
25	P0621X025	UPPER WHEEL COVER
26	P0621X026	LOCK WASHER 1/2
27	P0621X027	HEX NUT 1/2-20
28	P0621X028	PHLP HD SCR M3-.5 X 18
29V2	P0621X029V2	INVERTER/CONTROLLER BOX V2.12.20
30	P0621X030	POTENTIOMETER COSMOS RV24YN B102
31	P0621X031	SWITCH W/LARGE STOP
32	P0621X032	KEY 5 X 5 X 25
33	P0621X033	SET SCREW 1/4-20 X 3/8
34	P0621X034	HEX NUT M8-1.25
35	P0621X035	PHLP HD SCR 1/4-20 X 1/2
36	P0621X036	LOWER WHEEL COVER
37	P0621X037	CAP SCREW 1/4-20 X 3/4
38	P0621X038	HEX NUT 3/4-16 (LH)
39V2	P0621X039V2	LOWER WHEEL V2
41	P0621X041	PULLEY
42	P0621X042	SHAFT
43	P0621X043	V-BELT A30

REF	PART #	DESCRIPTION
44	P0621X044	SHAFT
45	P0621X045	BALL BEARING 6004ZZ
46	P0621X046	BLADE TENSION SCALE
47	P0621X047	HEX NUT 5/16-18
48	P0621X048	KNOB 5/16-18 X 2
49	P0621X049	STRAIN RELIEF M15 TYPE-1 SNAP-IN
50	P0621X050	POWER CORD
51	P0621X051	MOTOR CORD
52	P0621X052	KNOB
53	P0621X053	CAP SCREW 1/4-20 X 3/4
54	P0621X054	ADJUSTMENT SLEEVE
55	P0621X055	HEX NUT 3/4-16
56	P0621X056	BEARING HOUSING
57	P0621X057	PIN 6MM
58	P0621X058	FLANGE BOLT 5/16-18 X 1-1/2
59	P0621X059	COVER
60	P0621X060	HEX NUT 5/8-11
61	P0621X061	FLAT WASHER 5/8
62	P0621X062	FLAT WASHER 3/8
63	P0621X063	HEX BOLT 3/8-16 X 2-1/2
64	P0621X064	MOTOR 1.25HP, 220V, 3-PHASE
64-1	P0621X064-1	JUNCTION BOX REAR COVER
64-2	P0621X064-2	JUNCTION BOX FRONT COVER
64-3	P0621X064-3	PHLP HD SCR 10-24 X 1/4
64-4	P0621X064-4	3-CIRCUIT TERMINAL BLOCK
65	P0621X065	ADJ HANDLE 3/8-16 X 1
66	P0621X066	KEY 5 X 5 X 30
67	P0621X067	HEX NUT 3/8-16
68	P0621X068	DUST PORT 2.5"
69	P0621X069	V-BELT A28
70	P0621X070	EXT RETAINING RING 15MM
71	P0621X071	MOTOR PULLEY
72	P0621X072	PULLEY
73	P0621X073	BRUSH
74	P0621X074	HEX NUT 1/4-20
75V2	P0621X075V2	SWITCH COVER V2.12.20
76	P0621X076	PHLP HD SCR M4-.7 x 18
77	P0621X077	PHLP HD SCR M4-.7 X 6
78	P0621X078	FLAT WASHER 3/8
79	P0621X079	HEX BOLT 1/4-20 X 3/4
80	P0621X080	PHLP HD SCR 10-24 X 1/4
81	P0621X081	HEX NUT 1/4-20



Table & Blade Guides

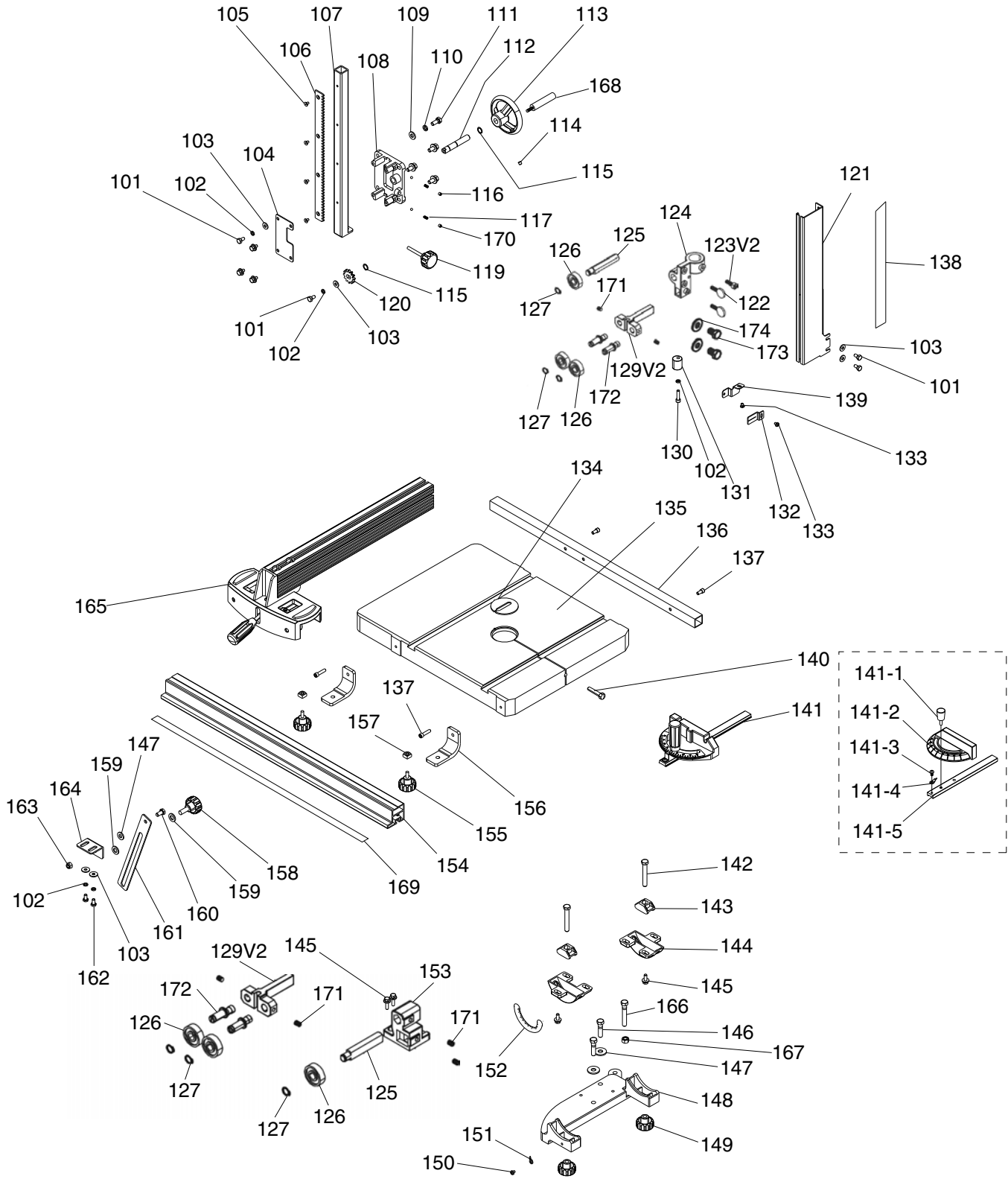


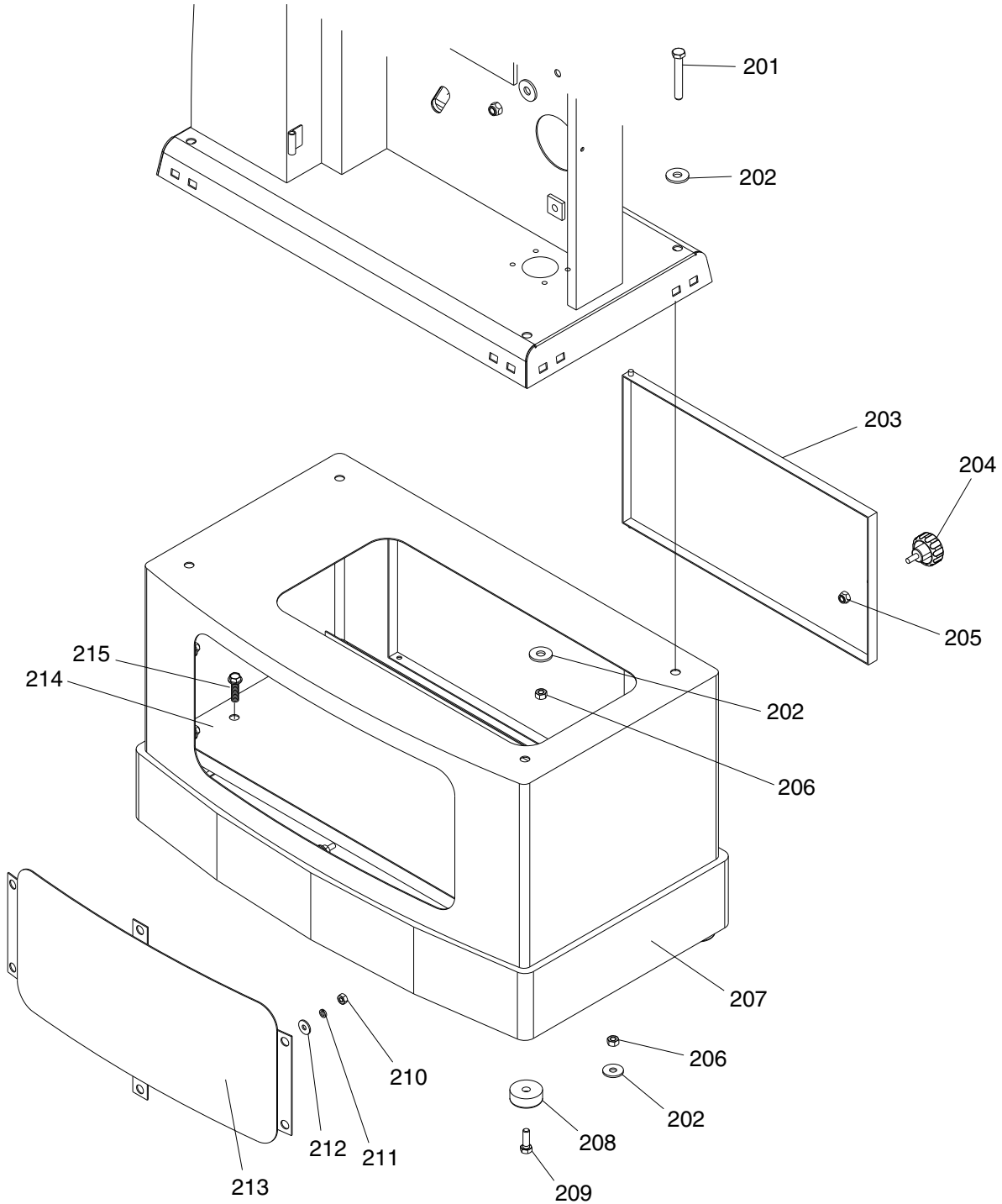
Table & Blade Guides Parts List

REF	PART #	DESCRIPTION
101	P0621X101	HEX BOLT 1/4-20 X 3/8
102	P0621X102	LOCK WASHER 1/4
103	P0621X103	FLAT WASHER 1/4
104	P0621X104	GUIDE BAR COVER
105	P0621X105	FLAT HD CAP SCR M5-.8 X 8
106	P0621X106	RACK
107	P0621X107	GUIDE BAR
108	P0621X108	BRACKET
109	P0621X109	FLAT WASHER 5/16
110	P0621X110	LOCK WASHER 5/16
111	P0621X111	HEX BOLT 5/16-18 X 5/8
112	P0621X112	PINION SHAFT
113	P0621X113	HANDWHEEL
114	P0621X114	SET SCREW 5/16-18 X 3/8
115	P0621X115	EXT RETAINING RING 13MM
116	P0621X116	BALL
117	P0621X117	COMPRESSION SPRING
118	P0621X118	THUMB SCREW 1/4-20 X 1/2
119	P0621X119	KNOB 5/16-18 X 2
120	P0621X120	PINION GEAR
121	P0621X121	BLADE GUARD
122	P0621X122	THUMB SCREW 1/4-20 X 3/4
123V2	P0621X123V2	HEX BOLT 1/4-20 X 1/2
124	P0621X124	UPPER GUIDE BRACKET
125	P0621X125	SUPPORT BEARING SHAFT
126	P0621X126	BALL BEARING 6200ZZ
127	P0621X127	EXT RETAINING RING 10MM
128	P0621X128	BLADE GUIDE BLOCK
129V2	P0621X129V2	BLADE GUIDE HOLDER V2.07.17
130	P0621X130	CAP SCREW 1/4-20 X 7/8
131	P0621X131	ECCENTRIC GUIDE POST
132	P0621X132	GUIDE POST POINTER
133	P0621X133	PHLP HD SCR 10-24 X 1/2
134	P0621X134	TABLE INSERT
135	P0621X135	TABLE
136	P0621X136	REAR FENCE RAIL
137	P0621X137	CAP SCREW 1/4-20 X 1 V1
137	P0621X137	CAP SCREW 1/4-20 X 1 V1
138	P0621X138	GUIDE POST SCALE
139	P0621X139	POINTER PLATE

REF	PART #	DESCRIPTION
140	P0621X140	TABLE PIN
141	P0621X141	MITER GAUGE ASSY
141-1	P0621X141-1	MITER GAUGE HANDLE 5/16"
141-2	P0621X141-2	MITER GAUGE BODY
141-3	P0621X141-3	PHLP HD SCR 10-24 X 1/4
141-4	P0621X141-4	MITER GAUGE POINTER
141-5	P0621X141-5	MITER GAUGE BAR
142	P0621X142	HEX BOLT 3/8-16 X 2-1/2
143	P0621X143	CLAMP SHOE
144	P0621X144	TRUNNION
145	P0621X145	FLANGE BOLT 1/4-20 X 3/4
146	P0621X146	HEX BOLT 5/16-18 X 1-1/4
147	P0621X147	FLAT WASHER 5/16
148	P0621X148	TRUNNION BASE
149	P0621X149	KNOB 3/8-16
150	P0621X150	PHLP HD SCR 10-24 X 1/4
151	P0621X151	TABLE TILT POINTER
152	P0621X152	TABLE TILT SCALE
153	P0621X153	LOWER GUIDE BRACKET
154	P0621X154	FRONT FENCE RAIL
155	P0621X155	KNOB 5/16-18 X 5/8
156	P0621X156	RAIL BRACKET
157	P0621X157	SQUARE NUT
158	P0621X158	KNOB 3/8-16 X 1
159	P0621X159	FLAT WASHER 3/8
160	P0621X160	HEX BOLT 5/16-18 X 1
161	P0621X161	ANGLE ADJUSTMENT BAR
162	P0621X162	HEX BOLT 1/4-20 X 1/2
163	P0621X163	LOCK NUT 5/16-18
164	P0621X164	ADJUSTMENT BAR BRACKET
165	P0621X165	COMPLETE FENCE ASSY
166	P0621X166	HEX BOLT 3/8-16 X 1-1/2
167	P0621X167	HEX NUT 3/8-16
168	P0621X168	HANDWHEEL HANDLE
169	P0621X169	FENCE SCALE
170	P0621X170	SET SCREW 1/4-20 X 3/8
171	P0621X171	SET SCREW 1/4-20 X 1/4
172	P0621X172	BEARING SHAFT
173	P0621X173	HEX BOLT 1/4-20 X 3/8
174	P0621X174	FLAT WASHER 1/4



Stand

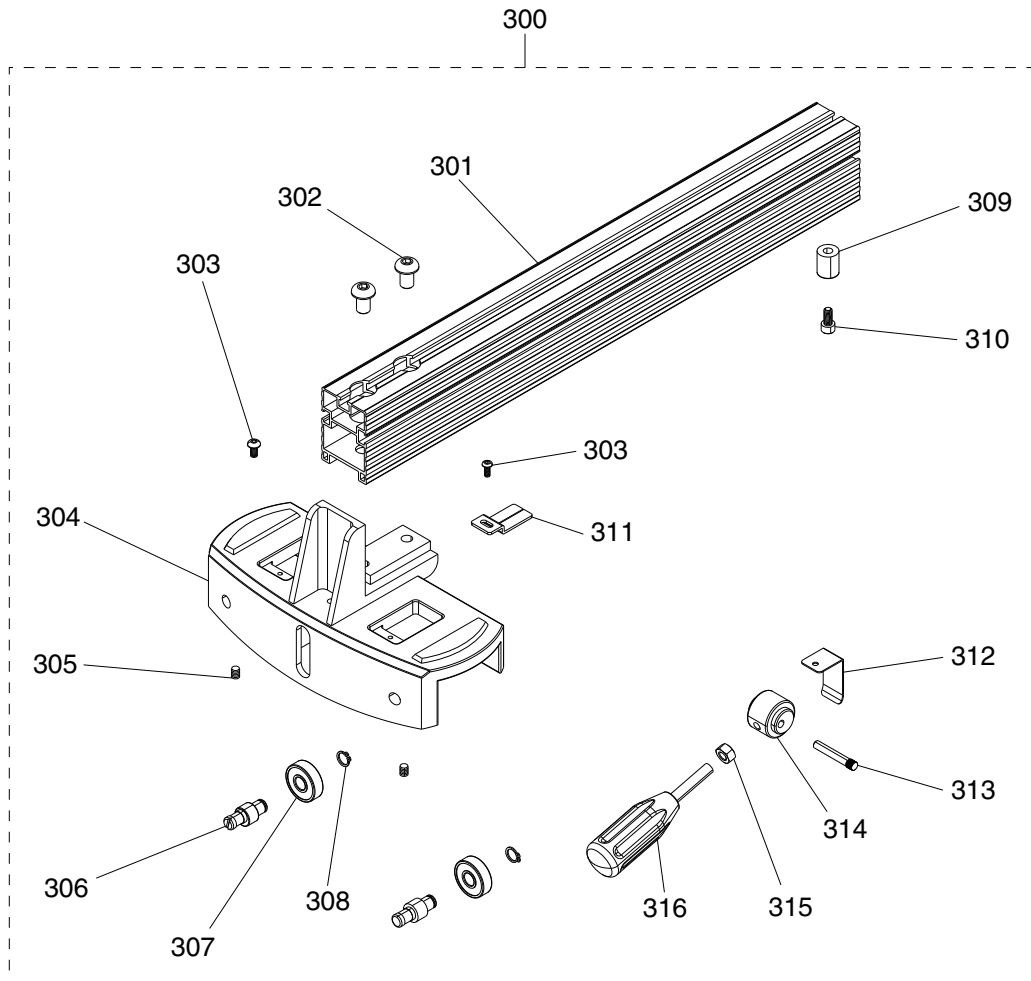


REF	PART #	DESCRIPTION
201	P0621X201	HEX BOLT 5/16-18 X 3
202	P0621X202	FLAT WASHER 5/16
203	P0621X203	STAND GUARD
204	P0621X204	KNOB 5/16-18 X 1
205	P0621X205	LOCK NUT 5/16-18
206	P0621X206	HEX NUT 5/16-18
207	P0621X207	STAND
208	P0621X208	FOOT

REF	PART #	DESCRIPTION
209	P0621X209	HEX BOLT 5/16-18 X 1
210	P0621X210	HEX NUT 1/4-20
211	P0621X211	LOCK WASHER 1/4
212	P0621X212	FLAT WASHER 1/4
213	P0621X213	STAND INSET PLATE
214	P0621X214	CABINET BOTTOM PLATE
215	P0621X215	FLANGE BOLT 1/4-20 X 3/4



Fence

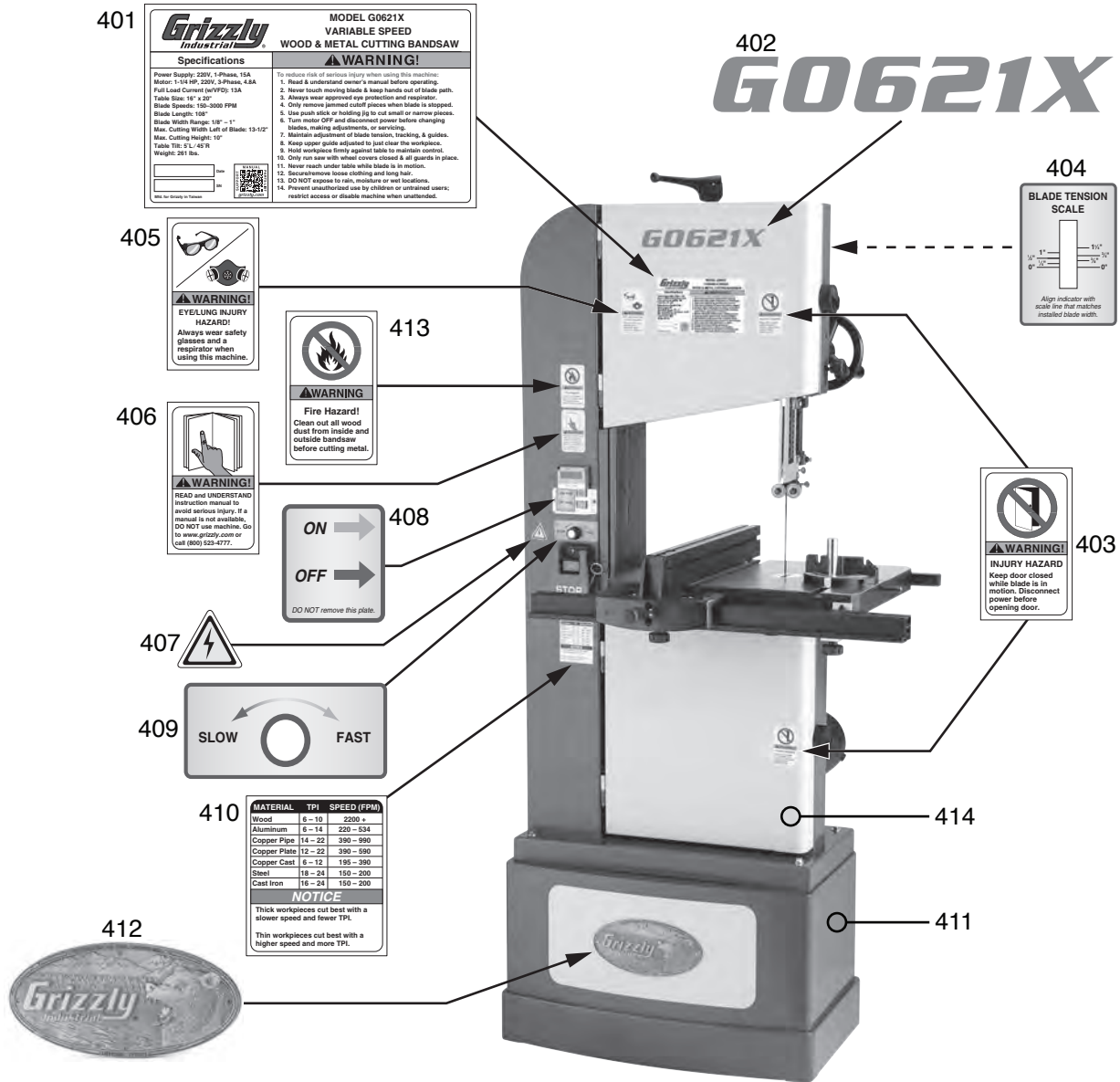


REF	PART #	DESCRIPTION
300	P0621X300	COMPLETE FENCE ASSY
301	P0621X301	FENCE BODY
302	P0621X302	BUTTON HD CAP SCR M10-1.5 X 16
303	P0621X303	PHLP HD SCR M5-.8 X 10
304	P0621X304	FENCE BASE
305	P0621X305	SET SCREW 1/4-20 X 3/8
306	P0621X306	ECCENTRIC SHAFT
307	P0621X307	BALL BEARING 6200 ZZ
308	P0621X308	INT RETAINING RING 10MM

REF	PART #	DESCRIPTION
309	P0621X309	RUNNER
310	P0621X310	CAP SCREW M6-1 X 16
311	P0621X311	FENCE POINTER
312	P0621X312	PLATE
313	P0621X313	PIN
314	P0621X314	LOCK MECHANISM
315	P0621X315	HEX NUT M8-1.25
316	P0621X316	FENCE HANDLE M8-1.25



Labels & Cosmetics



REF	PART #	DESCRIPTION
401	P0621X401	MACHINE ID LABEL
402	P0621X402	MODEL NUMBER LABEL
403	P0621X403	DOOR CLOSED LABEL
404	P0621X404	BLADE TENSION LABEL
405	P0621X405	GLASSES/RESPIRATOR LABEL
406	P0621X406	READ MANUAL LABEL
407	P0621X407	ELECTRICITY LABEL

REF	PART #	DESCRIPTION
408	P0621X408	MOTOR SWITCH ON/OFF LABEL
409	P0621X409	SPEED DIAL LABEL
410	P0621X410	CUTTING CHART LABEL
411	P0621X411	TOUCH-UP PAINT, GRIZZLY GREEN
412	P0621X412	GRIZZLY LOGO PLATE
413	P0621X413	FIRE HAZARD LABEL
414	P0621X414	TOUCH-UP PAINT, GRIZZLY PUTTY

⚠ WARNING

Safety labels help reduce the risk of serious injury caused by machine hazards. If any label comes off or becomes unreadable, the owner of this machine **MUST** replace it in the original location before resuming operations. For replacements, contact (800) 523-4777 or www.grizzly.com.

