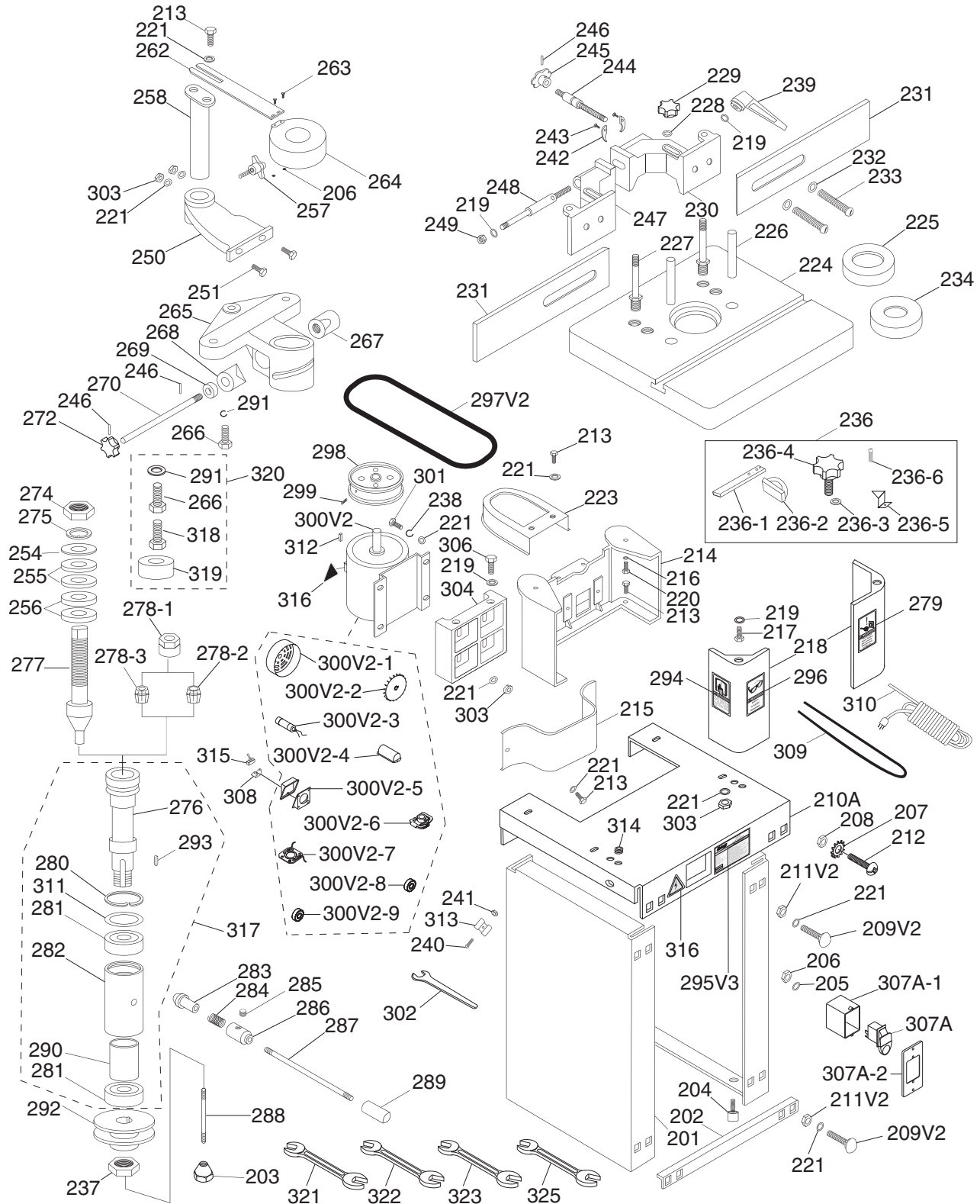


SECTION 10: PARTS

We do our best to stock replacement parts when possible, but we cannot guarantee that all parts shown are available for purchase. Call (800) 523-4777 or visit www.grizzly.com/parts to check for availability.



Parts List

REF	PART #	DESCRIPTION
201	P0510Z201	SIDE PANEL
202	P0510Z202	TIE BAR
203	P0510Z203	TAPER NUT M8-1.25
204	P0510Z204	RUBBER FOOT
205	P0510Z205	FLAT WASHER 4MM
206	P0510Z206	HEX NUT M4-.7
207	P0510Z207	EXT TOOTH WASHER 5MM
208	P0510Z208	HEX NUT M5-.8
209V2	P0510Z209V2	CARRIAGE BOLT M8-1.25 X 12 V2.11.21
210A	P0510Z210A	SHELF V2.07.07
211V2	P0510Z211V2	HEX NUT M8-1.25 V2.11.21
212	P0510Z212	PHLP HD SCR M5-.8 X 12
213	P0510Z213	HEX BOLT M8-1.25 X 12
214	P0510Z214	TABLE SUPPORT
215	P0510Z215	SPINDLE PULLEY GUARD
216	P0510Z216	LOCK WASHER 1/2"
217	P0510Z217	HEX BOLT M12-1.75 X 20
218	P0510Z218	TABLE LEG
219	P0510Z219	FLAT WASHER 1/2"
220	P0510Z220	HEX BOLT M12-1.75 X 25
221	P0510Z221	FLAT WASHER 3/8"
223	P0510Z223	BELT GUARD
224	P0510Z224	WORKING TABLE
225	P0510Z225	TABLE INSERT 1-3/4"
226	P0510Z226	TAPER PIN
227	P0510Z227	CLAMP STUD
228	P0510Z228	FLAT WASHER 5/16"
229	P0510Z229	STAR KNOB (FEMALE) M8-1.25
230	P0510Z230	FENCE BODY RIGHT
231	P0510Z231	FENCE 1 PC
232	P0510Z232	FLAT WASHER 8MM
233	P0510Z233	PHLP HD SCR M8-1.25 X 20
234	P0510Z234	TABLE INSERT 1-3/8"
236	P0510Z236	COMPLETE MITER GAUGE
236-1	P0510Z236-1	MITER BAR
236-2	P0510Z236-2	MITER GAUGE BODY
236-3	P0510Z236-3	FLAT WASHER 6MM
236-4	P0510Z236-4	STAR KNOB M6-1 X 16
236-5	P0510Z236-5	POINTER
236-6	P0510Z236-6	PHLP HD SCR M4-.7 X 8
237	P0510Z237	CARTRIDGE NUT M18-1.5
238	P0510Z238	LOCK WASHER 3/8"
239	P0510Z239	LOCK HANDLE M12-1.75
240	P0510Z240	PHLP HD SCR M6-1 X 12
241	P0510Z241	HEX NUT M6-1

REF	PART #	DESCRIPTION
242	P0510Z242	HALF COLLAR
243	P0510Z243	PHLP HD SCR M6-1 X 12
244	P0510Z244	ADJUSTING SCREW STUD
245	P0510Z245	STAR KNOB 8MM, PINNED
246	P0510Z246	ROLL PIN 3 X 20
247	P0510Z247	FENCE BODY LEFT
248	P0510Z248	CLAMP STUD
249	P0510Z249	HEX NUT M12-1.75
250	P0510Z250	MOUNTING BRACKET
251	P0510Z251	HEX BOLT M8-1.25 X 30
254	P0510Z254	RUB COLLAR 1/2 X 1-3/16 X 3/16
255	P0510Z255	RUB COLLAR 1/2 X 1-3/16 X 1/4
256	P0510Z256	RUB COLLAR 1/2 X 1-3/16 X 3/8
257	P0510Z257	STAR KNOB BOLT M10-1.5 X 28
258	P0510Z258	GUARD MOUNTING POST
262	P0510Z262	GUARD ATTACHMENT BAR
263	P0510Z263	PHLP HD SCR M4-.7 X 12
264	P0510Z264	SAFETY GUARD
265	P0510Z265	HOUSING BRACKET
266	P0510Z266	HEX BOLT M12-1.75 X 30
267	P0510Z267	CLAMP SLEEVE RIGHT
268	P0510Z268	CLAMP SLEEVE LEFT
269	P0510Z269	STUFF RING
270	P0510Z270	LOCK BAR
272	P0510Z272	STAR KNOB 12MM, PINNED
274	P0510Z274	SPINDLE NUT
275	P0510Z275	SAFETY WASHER
276	P0510Z276	SPINDLE CARTRIDGE
277	P0510Z277	CUTTER SPINDLE V2.02.08
278-1	P0510Z278-1	ROUTER BIT COLLET NUT
278-2	P0510Z278-2	ROUTER BIT COLLET 1/2"
278-3	P0510Z278-3	ROUTER BIT COLLET 1/4"
279	P0510Z279	UNPLUG MACHINE LABEL
280	P0510Z280	INT RETAINING RING 47MM
281	P0510Z281	BALL BEARING 6204
282	P0510Z282	SPINDLE HOUSING
283	P0510Z283	BEARING CONE
284	P0510Z284	COIL SPRING
285	P0510Z285	SET SCREW M8-1.25 X 8
286	P0510Z286	SPRING COLLAR
287	P0510Z287	STUD M12-1.75 X 355
288	P0510Z288	DRAWBAR M8-1.25 X 130 V2.02.08
289	P0510Z289	SLIP-ON HANDLE 12MM
290	P0510Z290	BEARING SLEEVE
291	P0510Z291	LOCK WASHER 12MM

WARNING

Safety labels help reduce the risk of serious injury caused by machine hazards. If any label comes off or becomes unreadable, the owner of this machine **MUST** replace it in the original location before resuming operations. For replacements, contact (800) 523-4777 or www.grizzly.com.



Parts List (Cont.)

REF	PART #	DESCRIPTION
292	P0510Z292	SPINDLE PULLEY
293	P0510Z293	KEY 4 X 4 X 20
294	P0510Z294	READ MANUAL LABEL
295V3	P0510Z295V3	MACHINE LABEL CSA V3.03.17
296	P0510Z296	SAFETY GLASSES LABEL
297V2	P0510Z297V2	V-BELT A29 V2.11.17
298	P0510Z298	MOTOR PULLEY
299	P0510Z299	SET SCREW M6-1 X 10
300V2	P0510Z300V2	MOTOR 1HP 120V 1-PH V2.10.16
300V2-1	P0510Z300V2-1	FAN COVER
300V2-2	P0510Z300V2-2	FAN
300V2-3	P0510Z300V2-3	CAPACITOR 125V 200M (3" X 1")
300V2-4	P0510Z300V2-4	CAPACITOR COVER
300V2-5	P0510Z300V2-5	WIRING BOX
300V2-6	P0510Z300V2-6	CENTRIFUGAL SWITCH
300V2-7	P0510Z300V2-7	CONTACT PLATE
300V2-8	P0510Z300V2-8	BALL BEARING 6204ZZ (FRONT)
300V2-9	P0510Z300V2-9	BALL BEARING 6204ZZ (REAR)
301	P0510Z301	HEX BOLT M8-1.25 X 35
302	P0510Z302	FLAT WRENCH 26MM
303	P0510Z303	HEX NUT M8-1.25
304	P0510Z304	MOTOR MOUNT PLATE

REF	PART #	DESCRIPTION
306	P0510Z306	HEX BOLT M12-1.75 X 35
307A	P0510Z307A	ON/OFF PADDLE SWITCH
307A-1	P0510Z307A-1	SWITCH REAR COVER V2.07.07
307A-2	P0510Z307A-2	SWITCH FRONT COVER V2.07.07
308	P0510Z308	FWD/REV SWITCH
309	P0510Z309	MOTOR CORD
310	P0510Z310	POWER CORD 14G
311	P0510Z311	WAVY WASHER 45MM
312	P0510Z312	KEY 5 X 5 X 22
313	P0510Z313	STRAIN RELIEF
314	P0510Z314	STRAIN RELIEF
315	P0510Z315	FWD/REV SWITCH
316	P0510Z316	ELECTRICITY LABEL
317	P0510Z317	SPINDLE CARTRIDGE ASSEMBLY
318	P0510Z318	HEX BOLT M12-1.75 X 40
319	P0510Z319	RUB COLLAR 1/2 X 1-3/16 X 1/2
320	P0510Z320	ROUTER TABLE SPACER KIT
321	P0510Z321	WRENCH 8 X 10MM OPEN-ENDS
322	P0510Z322	WRENCH 12 X 14MM OPEN-ENDS
323	P0510Z323	WRENCH 27 X 30MM OPEN-ENDS
325	P0510Z325	WRENCH 22 X 24MM OPEN-ENDS

WARNING

Safety labels help reduce the risk of serious injury caused by machine hazards. If any label comes off or becomes unreadable, the owner of this machine **MUST** replace it in the original location before resuming operations. For replacements, contact (800) 523-4777 or www.grizzly.com.

