



MODEL H7862 HEAVY-DUTY HAND PUNCH w/STAND INSTRUCTIONS

⚠ CAUTION

To reduce the risk of injury when using this tool:

- Read and understand this entire instructions document.
- Keep fingers and hands away from the punch and die when making a cut to prevent crushing injuries.
- The sharp edges of sheet metal can easily cut the skin. Protect your hands when working with sheet metal.
- **ALWAYS** operate the hand punch within the stated capacities to avoid shattering the punch or die into flying metal fragments that could cause injury.
- Make sure you are in a comfortable, stable position when using the hand punch to avoid slipping or falling.
- **DO NOT** use a punch or die that is cracked or chipped. Damaged punches or dies can shatter under pressure and present an injury hazard.
- **ALWAYS** punch a full hole. Attempting to punch a partial hole may damage the tool and cause injury from shattering components.
- **DO NOT** modify this hand punch or the included punch and die sets.

Specifications

| | |
|--------------------------|-----------------|
| Max. Pressure | 1.2 Tons |
| Jaw Opening | $\frac{3}{4}$ " |
| Throat Capacity | 3" |
| Included Punch Type..... | Type O |

Inventory

| Contents of Boxes 1 & 2 (Figure 1) | Qty |
|---|-----|
| A. Stand..... | 1 |
| B. Hand Punch Assembly..... | 1 |
| C. Die Key..... | 1 |
| D. Punch & Die Set $\frac{11}{32}$ "..... | 1 |
| E. Punch & Die Set $\frac{9}{32}$ "..... | 1 |
| F. Punch & Die Set $\frac{7}{32}$ "..... | 1 |
| G. Punch & Die Set $\frac{5}{32}$ "..... | 1 |
| H. Punch & Die Set $\frac{13}{32}$ "..... | 1 |
| I. Punch & Die Set $\frac{15}{32}$ "..... | 1 |
| J. Punch & Die Set $\frac{17}{32}$ "..... | 1 |
| K. Hex Wrench 2.5mm..... | 1 |
| L. Carrying Case (not shown)..... | 1 |

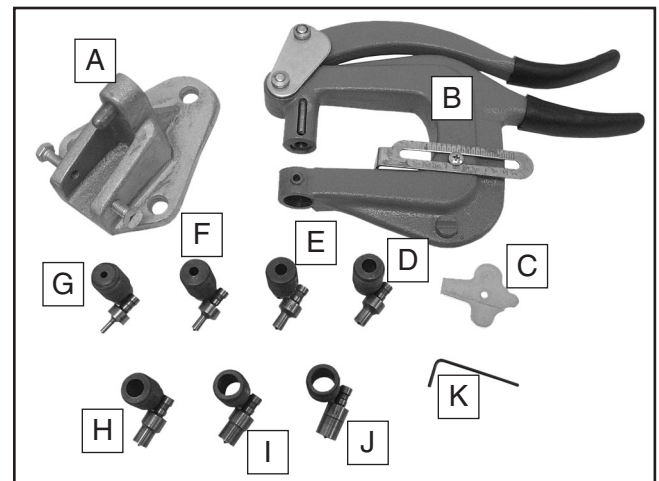


Figure 1. Model H7862 inventory.

If you need help with your new hand punch, call our Tech Support at: (570) 546-9663.

COPYRIGHT © JUNE, 2009 BY GRIZZLY INDUSTRIAL, INC.

WARNING: NO PORTION OF THIS MANUAL MAY BE REPRODUCED IN ANY SHAPE OR FORM WITHOUT THE WRITTEN APPROVAL OF GRIZZLY INDUSTRIAL, INC.

#TS11847 PRINTED IN CHINA

Removing Punch & Die

1. Use the included hex wrench to loosen the two set screws that secure the punch and die (see **Figure 2**).

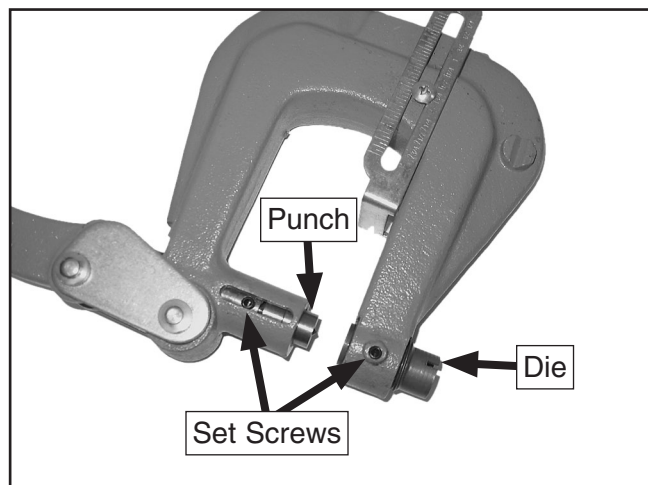


Figure 2. Punch and die set installed.

2. Insert the die key into the slots at the bottom of the die, then unthread it from the punch.
3. Slide the punch down and through the hole left by the die.
4. Before storing, clean away any debris from the punch and die, then apply a thin coat of light machine oil to prevent corrosion and rust.

Installing Punch & Die

1. Clean away any debris from the inside of the holes and the punch and die, then apply a thin coat of light machine oil to the mating surfaces to prevent corrosion and rust.

2. Orient the punch as shown in **Figure 3**, then insert it up through the die hole and into the punch shaft. Tighten the set screw to secure it in place.

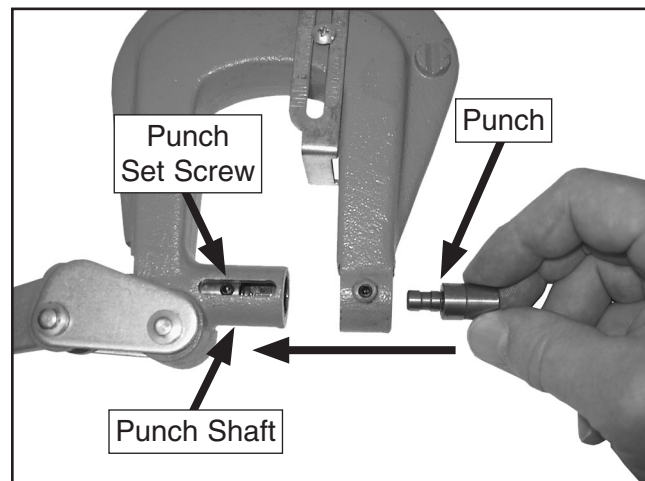


Figure 3. Inserting the punch.

3. Position the die as shown in **Figure 4**, then thread it into the hand punch until it is slightly above the top surface (see **Figure 2**).

Note: If necessary, use the die key in the die slots to thread the die.

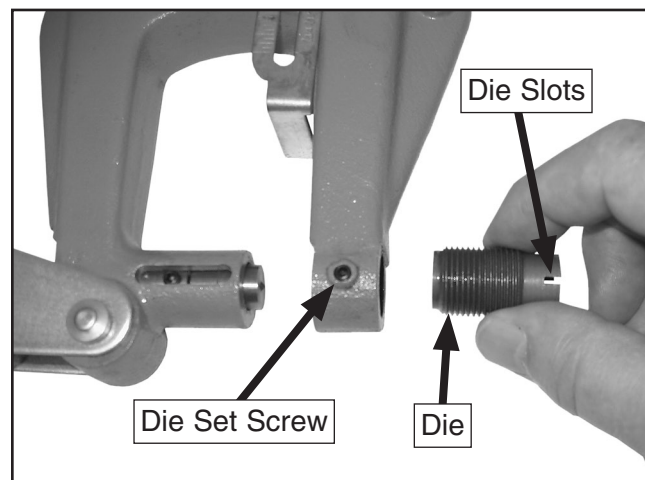


Figure 4. Positioning the die for threading it into the hand punch.

4. Tighten the die set screw to hold the die in place.
5. Use the handle to move the punch into the die and check for clearance and position. If necessary, reposition the punch or die.



Using Stand

1. Securely attach the stand to a stable surface with $\frac{3}{8}$ " hex or lag bolts.
2. Slide the hand punch onto the stand pin, as shown in **Figure 5**.

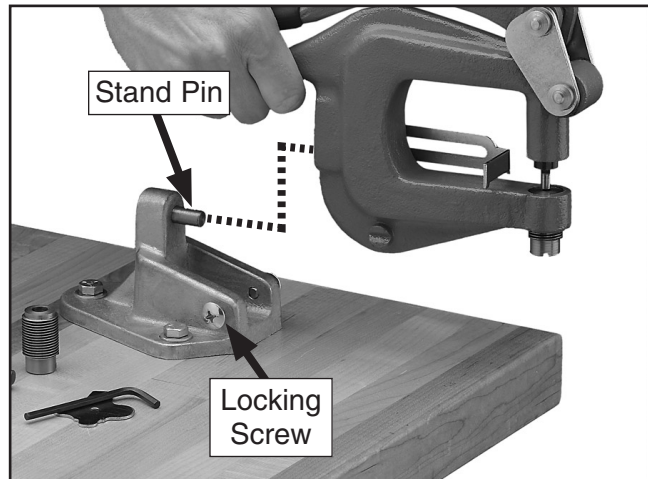


Figure 5. Attaching the hand punch to the stand.

3. Make sure the hand punch is fully seated onto the pin, then tighten the locking screws on either side to secure it in place.

Work Stop

The adjustable work stop shown in **Figure 6** is used for repetitive operations of the same dimensions. Loosen the screw that secures the work stop, position the work stop for your operation, then re-tighten the screw to secure it in place.

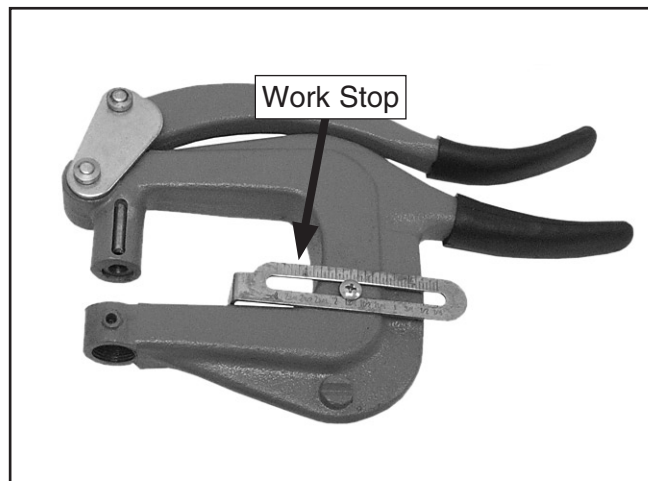


Figure 6. Work stop.

Operation Information

- Refer to the chart in **Figure 7** for the maximum workpiece gauge (thickness) of mild steel that can be used with each punch and die diameter. Keep in mind that the maximum punching pressure for your hand punch is 1.2 Tons.

| Punch Diameter | Max. Gauge (Mild Steel) | Thickness (inches) |
|-------------------|-------------------------|--------------------|
| $\frac{5}{32}$ " | 11 Ga. | 0.120" |
| $\frac{7}{32}$ " | 14 Ga. | 0.075" |
| $\frac{9}{32}$ " | 16 Ga. | 0.062" |
| $\frac{11}{32}$ " | 18 Ga. | 0.048" |
| $\frac{13}{32}$ " | 20 Ga. | 0.036" |
| $\frac{15}{32}$ " | 20 Ga. | 0.036" |
| $\frac{17}{32}$ " | 22 Ga. | 0.031" |

Figure 7. Maximum workpiece gauge/thickness per punch diameter chart.

- Inspect the punch and die for cracks or damage before using them. Do not use damaged punches and dies or they may shatter during use.
- Use slow, steady pressure when punching to ensure good results.
- Using a "cheater bar" or other tool to increase pressure on the cast iron handle could break the hand punch. If you cannot punch the hole with hand pressure, make sure you are operating with the capacities of the punch (refer to the chart in **Figure 7**).

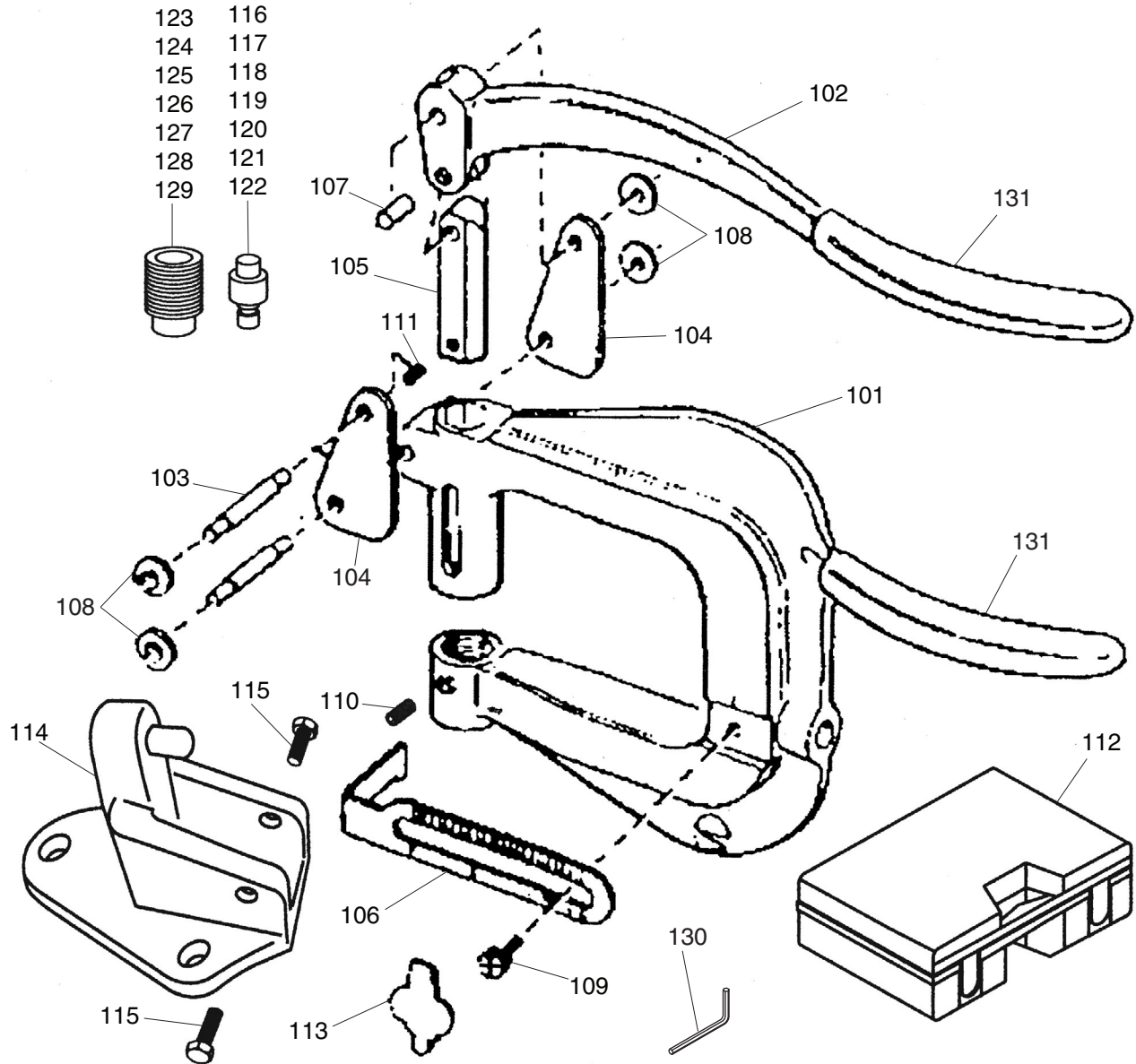
Maintenance & Storage

Clean away any debris from the hand punch after each use, then apply a thin coat of light machine oil to the unpainted surfaces to prevent corrosion and rust.

Secure the hand punch and included components inside the carrying case, then store the case in a dry area.



Parts



| REF | PART # | DESCRIPTION |
|-----|-----------|------------------------|
| 101 | PH7862101 | PUNCH BODY |
| 102 | PH7862102 | HANDLE |
| 103 | PH7862103 | SPECIAL GROOVED PIN |
| 104 | PH7862104 | PIVOT BRACKET |
| 105 | PH7862105 | DIE SHAFT |
| 106 | PH7862106 | WORK STOP |
| 107 | PH7862107 | HINGE PIN 6 X 25 |
| 108 | PH7862108 | SPECIAL WASHER |
| 109 | PS08M | PHLP HD SCR M5-.8 X 12 |
| 110 | PSS07M | SET SCREW M5-.8 X 5 |
| 111 | PSS07M | SET SCREW M5-.8 X 5 |
| 112 | PH7862112 | PLASTIC CARRYING BOX |
| 113 | PH7862113 | DIE KEY |
| 114 | PH7862114 | STAND |
| 115 | PB85M | HEX BOLT M8-1.25 X 18 |
| 116 | PH7862116 | ROUND PUNCH 5/32" |

| REF | PART # | DESCRIPTION |
|-----|-----------|--------------------|
| 117 | PH7862117 | ROUND PUNCH 7/32" |
| 118 | PH7862118 | ROUND PUNCH 9/32" |
| 119 | PH7862119 | ROUND PUNCH 11/32" |
| 120 | PH7862120 | ROUND PUNCH 13/32" |
| 121 | PH7862121 | ROUND PUNCH 15/32" |
| 122 | PH7862122 | ROUND PUNCH 17/32" |
| 123 | PH7862123 | ROUND DIE 5/32" |
| 124 | PH7862124 | ROUND DIE 7/32" |
| 125 | PH7862125 | ROUND DIE 9/32" |
| 126 | PH7862126 | ROUND DIE 11/32" |
| 127 | PH7862127 | ROUND DIE 13/32" |
| 128 | PH7862128 | ROUND DIE 15/32" |
| 129 | PH7862129 | ROUND DIE 17/32" |
| 130 | PAW02.5M | HEX WRENCH 2.5MM |
| 131 | PH7862131 | RUBBER GRIP |

