

To install the laser guide on the Model G0524 Rip Saw:

1. **Disconnect the Model G0524 Rip Saw from the power source!**
2. Attach the steel arm to the head casting with the (4) M8-1.25 x 25 cap screws, (4) 8mm flat washers, and (4) M8 lock washers. *Note—The mounting location and drill pattern for the steel arm are shown on the parts diagram. The holes must be drilled and tapped to accept M8-1.25 threads.*
3. Mount the laser bracket to the top of the steel arm with the (2) M6-1 x 16 cap screws and (2) 6mm flat washers.
4. Place the laser clamp around the laser and secure the assembly to the laser bracket with the (2) M6-1 x 35 cap screws.
5. Attach the black power box to the rip saw with the (2) M5-8 x 8 Phillips head screws. *Note—Make sure the loose end of the green ground wire is secured between the head of the Phillips screw and the black power box.*
6. Route the power wires from the power box through the side of the saw base and into the electrical panel compartment.
7. Connect the R1 and T1 power wires to their respective R1 and T1 locations on the main terminal at the electrical panel.
8. Feed the laser power wire through the access holes on the steel arm, and plug the power wire into the back of the power box.
9. Cut a board, turn the saw *OFF*, place the board against the fence, and finally, adjust the laser beam along the freshly cut edge.

INVENTORY	QTY
• Steel Arm .....	1
• Laser Bracket .....	1
• Laser Clamp .....	1
• Laser .....	1
• Power Box .....	1
• Cap Screws M8-1.25 x 25 .....	4
• Flat Washers 8mm .....	4
• Lock Washers 8mm .....	4
• Cap Screws M6-1 x 16 .....	2
• Flat Washers 6mm .....	2
• Cap Screws M6-1 x 35 .....	2
• Phillips Head Screws M5-.8 x 8 .....	2

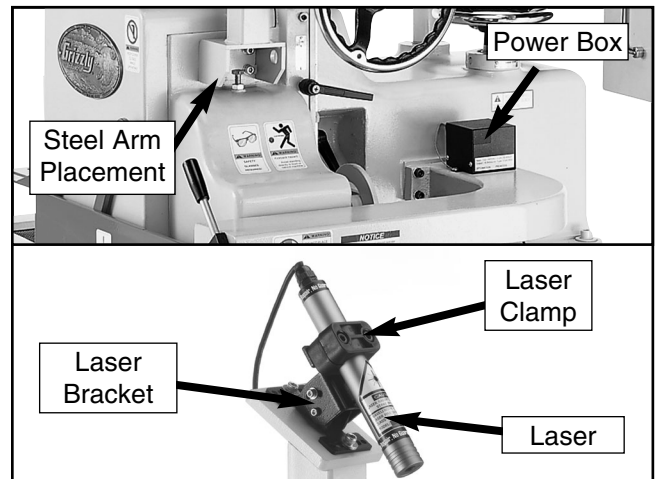


Figure 1. Model H5749 Laser Guide.

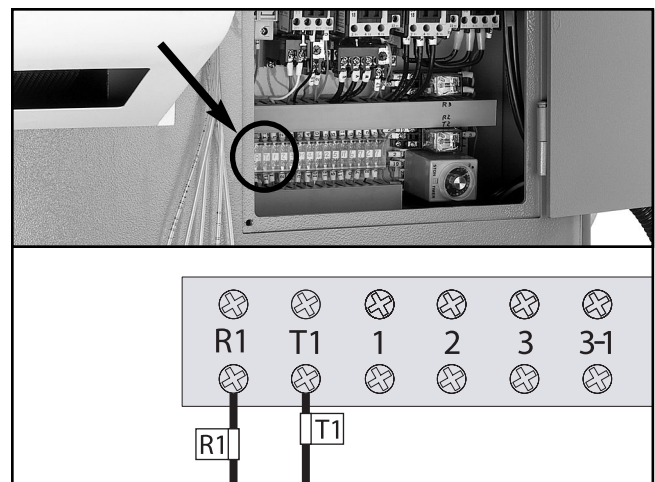
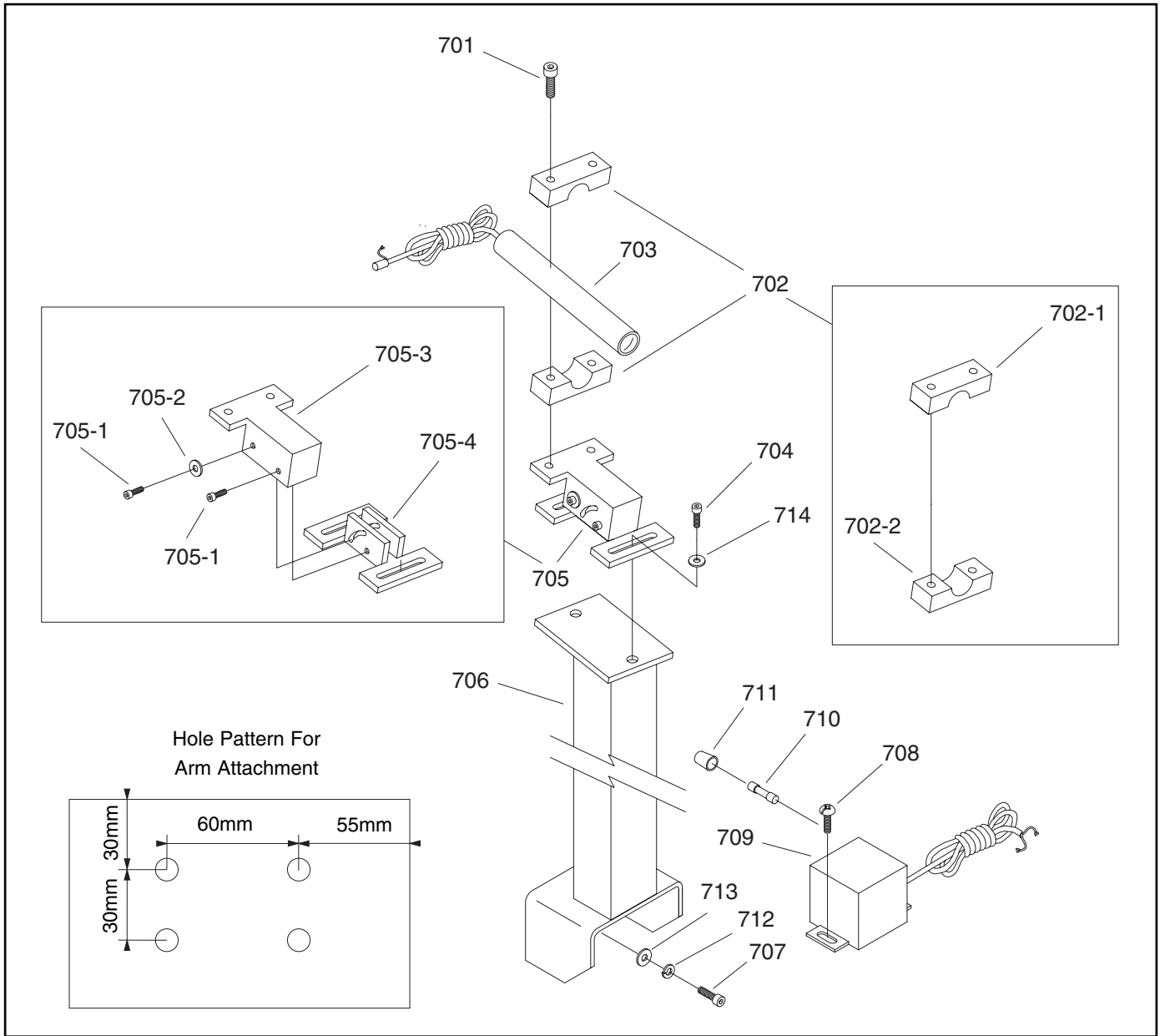


Figure 2. Electrical wiring.

### ! WARNING

**DO NOT look into the end of the laser. Serious eye damage will occur.**



REF	PART #	DESCRIPTION
701	PSB48M	CAP SCREW M6-1.0 X 35
702	PH5749702	LASER CLAMP ASSEMBLY
702-1	PH5749702-1	LASER CLAMP (TOP)
702-2	PH5749702-2	LASER CLAMP (BOTTOM)
703	PH5749703	LASER
704	PSB01M	CAP SCREW M6-1.0 X 16
705	PH5749705	LASER BRACKET ASSEMBLY
705-1	PSB18M	CAP SCREW M4-0.7 X 8
705-2	PW05M	FLAT WASHER 4MM
705-3	PH5749705-3	LASER BRACKET (TOP)

REF	PART #	DESCRIPTION
705-4	PH5749705-4	LASER BRACKET (BOTTOM)
706	PH5749706	STEEL ARM
707	PSB31M	CAP SCREW M8-1.25 X 25
708	PS05M	PHLP HD SCR M5-0.8 X 8
709	PH5749709	POWER BOX
710	PH5749710	FUSE T1AL250V
711	PH5749711	FUSE COVER
712	PLW04M	LOCK WASHER 8MM
713	PW01M	FLAT WASHER 8MM
714	PW03M	FLAT WASHER 6MM

COPYRIGHT © NOVEMBER 2003 BY GRIZZLY INDUSTRIAL, INC.  
**WARNING: NO PORTION OF THIS MANUAL MAY BE REPRODUCED IN ANY SHAPE OR FORM WITHOUT THE WRITTEN APPROVAL OF GRIZZLY INDUSTRIAL, INC.**  
 #5902 PRINTED IN TAIWAN