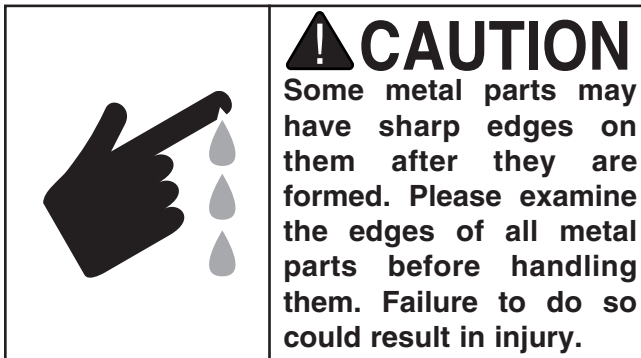




## Hydraulic Press H2871 12 Ton Jack



We are proud to offer the Grizzly Model H2871 Hydraulic Press. The Model H2871 is part of a growing Grizzly family of fine machinery. When used according to the guidelines set forth in this manual, you can expect years of trouble-free, enjoyable operation and proof of Grizzly's commitment to customer satisfaction.

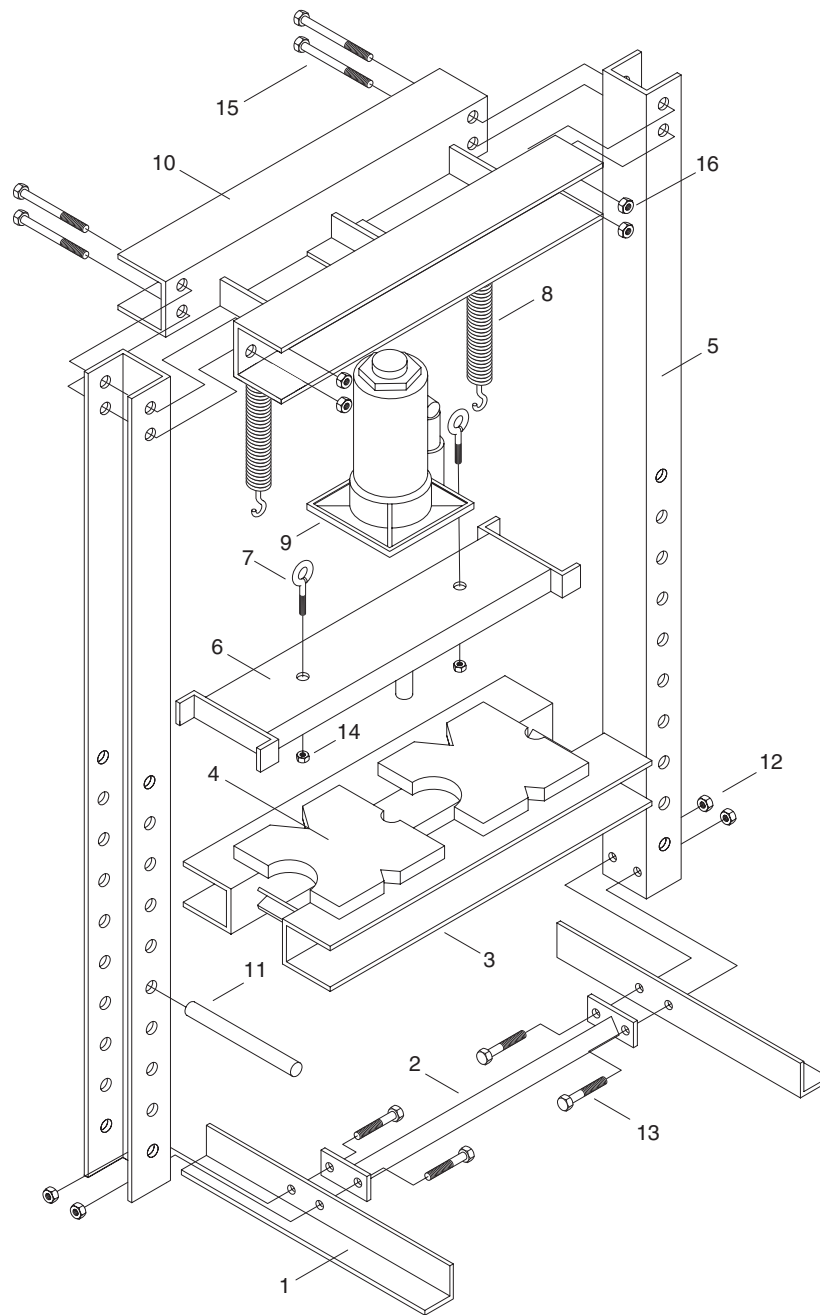
The Model H2871 is capable of a wide variety of functions. Pressing and removing bearings, gears and pulleys; punching; bending; straightening; riveting and broaching are just a few of the useful operations. Grizzly offers a number of accessories for the Model H2871 in the current catalog.

Please read the instructions below before assembling this tool. If you need additional help with any of these instructions, please contact our Customer Service Department at 570-546-9663 or by internet at:  
[techsupport@grizzly.com](mailto:techsupport@grizzly.com).

**Tools Required For Assembly:** 13, 16, 18 and 19mm open end wrenches and a metric ratchet set.

To begin assembly:

1. Use the (4) M10-1.5 x 30 hex bolts and M10 nuts to assemble the base supports, cross beam and vertical supports. Use the detailed drawing on the following page for assistance.
2. There are two support pins that slide into the vertical supports. Insert each of the pins into the highest set of holes.
3. Carefully slide the press bed platform over the top of the vertical supports. Allow the bed to slide down onto the support pins.
4. Install the two eye bolts into the press plate and secure with M8 nuts.
5. Carefully slide the press plate over the vertical supports. Allow the press plate to rest on the press bed platform.
6. The press header is held to the top of the vertical supports with (4) M12-1.75 x 115 hex bolts and M12 nuts.
7. Make sure all fasteners are securely tightened.
8. Hook each spring to the mounting holes on the underside of the press header. Carefully lift the press plate eye bolts up to the spring bottoms and hook them together.
9. The bottle jack fits into a recess on the underside of the press header. The base of the jack rests on the top of the press plate. Use caution when installing the jack. If the jack is not fully seated into the press, the jack could fall and cause serious personal injury.
10. Lay the press blocks across the press bed platform. Your hydraulic press is now ready for use.



Ref#	Part#	Description
001	PH2871001	BASE SUPPORT
002	PH2871002	CROSS BEAM
003	PH2871003	PRESS BED PLATFORM
004	PH2871004	PRESS BLOCKS
005	PH2871005	VERTICAL SUPPORT
006	PH2871006	PRESS PLATE
007	PH2871007	EYE BOLT
008	PH2871008	SPRING

Ref#	Part#	Description
009	PH2871009	BOTTLE JACK
010	PH2871010	PRESS HEADER
011	PH2871011	SUPPORT PIN
012	PH2871012	NUT M10
013	PH2871013	HEX BOLT M10-1.5 X 30
014	PH2871014	NUT M8
015	PH2871015	HEX BOLT M12-1.75 X 115
016	PH2871016	NUT M12